

WELCOME



ADHERE BONDS COATS PVT. LTD.,

---

*The versatile construction chemicals*



---

## Responsible Care Since 20 years

High Tech Group  
Since 1996

Adhere Bonds



## About Us

**Here There and everywhere Adhere - Nothing else comes near**

Adherebonds Coats Pvt. Ltd. is a two decades enterprise providing world-class construction chemicals and decorative coatings for homes and industrial applications. Adherebonds adheres to strict global quality standards endorsed by our Iso Certification-9001-2008. Our Technical / Product team consists of expert polymer chemical specialists who are determined to give the best and latest. All our products are born out of latest Nano Technology / Green Building Concept using ultra -tech processes, quality systems and controls. Today ADHEREBONDS range includes over 70 products for diverse needs in construction.





## **OUR VISION**

To be a world-class enterprise in construction chemicals and coatings.

VISION

## **OUR MISSION**

To provide superior products with matchless value to customers

MISSION



## QUALITY POLICY

To provide superior product with matchless value to customers.

## CUSTOMER CARE

Give the best and latest. Provide matchless customer care by understanding needs and solve to their satisfaction.



## MARKETING NETWORK

Also providing workforce from applicator network to execute jobs. Marketing Network, a strong marketing arm to meet of customers in Tamil Nadu, Andhra Pradesh, Bangalore, Kerala and Pondicherry.





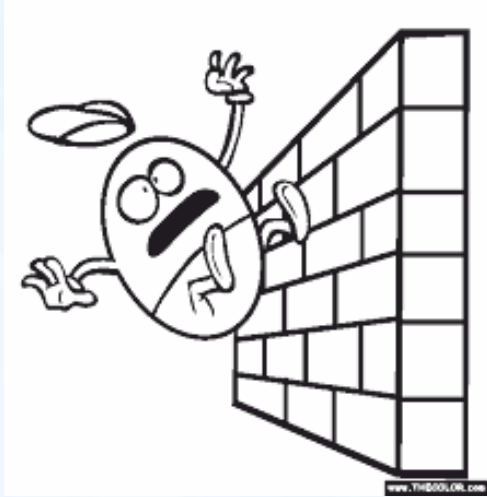
## PRODUCTS AT GLANCE

<b>Water Proofing</b> <ul style="list-style-type: none"><li>• Admixture</li><li>• Membrane</li><li>• Crystallization</li></ul>	<b>Tile Adhesive</b> <ul style="list-style-type: none"><li>• General Purpose</li><li>• Tile On Tile</li><li>• White Adhesive</li></ul>	<b>Tile Grouts</b> <ul style="list-style-type: none"><li>• Polymer Grouts</li><li>• Epoxy Grouts</li><li>• Grouts Modifier</li></ul>	<b>Coating</b> <ul style="list-style-type: none"><li>• Thermal Barrier Coating</li><li>• Anti Carbonate Coating</li><li>• Acrylic Exterior &amp; Interior</li></ul>
<b>Tile ✓ Rite</b> <ul style="list-style-type: none"><li>• Tile Beading</li><li>• 7mm, 9.5 mm,</li><li>• 10.5 mm, 12mm</li></ul>	<b>Epoxy's</b> <ul style="list-style-type: none"><li>• Epoxy Flooring</li><li>• High Build / Low Build</li><li>• Screed</li></ul>	<b>Grouts</b> <ul style="list-style-type: none"><li>• Admixture</li><li>• Non-Shrink Grouts</li><li>• Anchor Grouts</li></ul>	<b>Wall Putty</b> <ul style="list-style-type: none"><li>• Wall Putty (Cements Based)</li><li>• Primer (Water Based)</li></ul>



## EPOXY FLOORING SYSTEM

*Technology Bonds with Excellence*



## EPOXY FLOORING & COATINGS

Build. Bond. Protect

*Humpty... Dumpty...*

- **ADHEREX** versatile epoxy system used in
- Electrical, Electronics, Automobile & Civil various application



### ADHEREX EPOXY FLOORINGS

Our **Adherex** Epoxy Flooring system used in different types of domestic, Industrial & Commercial coatings/Application as follows:-

- Industrial floors
- Pharmaceuticals
- **Warehouses**
- Food & Brewages
- Residential Garage
- Basement floors
- Restaurants
- Office facilities
- Laboratories
- Aerospace Industries
- Picture Tube Manufacturing Plants
- Textile Mills Warehouse
- Indoor Stadium
- Milk Diary
- Bottling Plant
- Auto Mobile Service Centre
- Clean Room
- Operation Theaters
- Power Plant
- Showroom Centre & Etc...





### ADHEREX EPOXY

#### Physical Properties of

- Excellent mechanical properties.
- Electrical insulating properties.
- Excellent adhesion.
- Aberration Resistance.
- Wear Resistance.
- Slip Resistance.
- Impact Resistance.
- Highly Impermeable.



### ADHEREX EPOXY

#### Advantages of

- Very strong and durable.
- Bond well with concrete surface and form a transparent, shiny film.
- Maximum penetration.
- Improves wear and chemical resistance
- Reduces water and salt absorption
- Act as a dust-proofer
- Low maintenance cost
- Easy to clean



### ADHEREX EPOXY

#### Application procedures

- Surface Preparation
- Apply primer
- Apply under lay if required( Screed)
- Apply Top Coats with desire color (RAL Shade)



## EPOXY FLOORING SYSTEM

### Surface Preparation

- Grind floor to remove dry dust & loose particle to make floor ready for application.
- Cutting of Grooves On concrete Floor



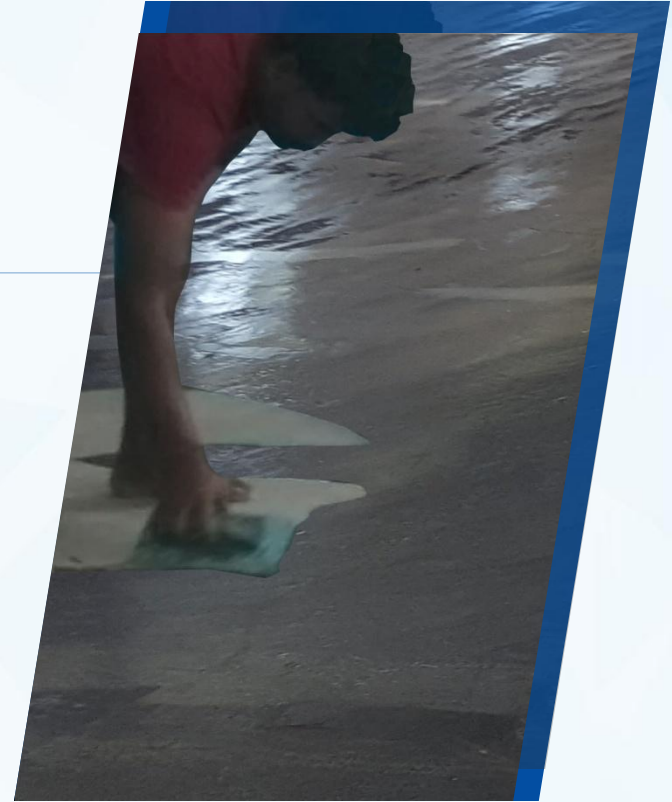


## EPOXY FLOORING SYSTEM

### ADHEREX – EP (Epoxy primer)

#### Application

**PRIMING:** Over the prepared surface apply one coat of ADHEREX Epoxy Primer multipurpose solvent free Epoxy Primer for a thickness of 150 microns.



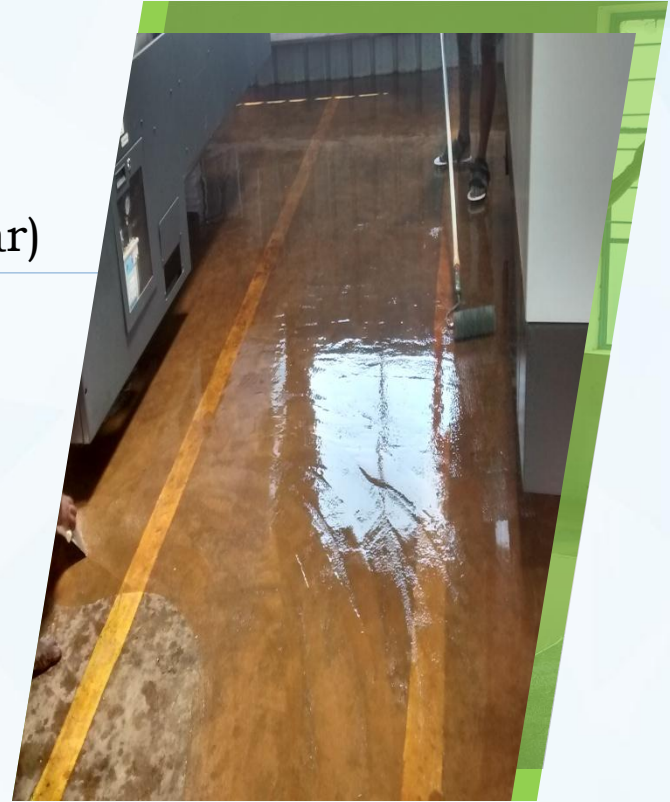


## EPOXY FLOORING SYSTEM

### ADHEREX – ULM (Under Lay Mortar)

#### Application

**ULM:** is a three component system based on Epoxy resin specially designed to impart high mechanical strength and good chemical resistance to flooring systems.





## EPOXY FLOORING SYSTEM

### ADHEREX – SL (Self Level Flooring)

#### Application

**TOP COAT:** Over the priming surface apply 1mm thick of ADHEREX High build Epoxy Coating with desire color. Total system thickness around 1000 microns.



# EPOXY FLOORING SYSTEM





# EPOXY FLOORING SYSTEM



## EPOXY FLOORING SYSTEM



# EPOXY FLOORING SYSTEM



[www.adherebonds.com](http://www.adherebonds.com)

# EPOXY FLOORING SYSTEM





## EPOXY FLOORING SYSTEM



[www.adherebonds.com](http://www.adherebonds.com)



## EPOXY FLOORING SYSTEM



## EPOXY FLOORING SYSTEM



[www.adherebonds.com](http://www.adherebonds.com)

# EPOXY FLOORING SYSTEM





## EPOXY FLOORING SYSTEM



[www.adherebonds.com](http://www.adherebonds.com)

# EPOXY FLOORING SYSTEM





## EPOXY FLOORING SYSTEM





## Our valuable clients





## Our valuable clients

The logo for Amraparkash, featuring a stylized infinity symbol and the text "AMRAPARKASH BUILDING YOUR FUTURE".	The logo for Preethi, featuring the word "Preethi" in a red, stylized font.	The logo for BGR Energy, featuring a stylized "BGR" in blue and red, with "ENERGY" below it.	The logo for Mahidhara Projects PVT. LTD., featuring the word "Mahidhara" in green and red, with "PROJECTS PVT. LTD." below it.	The logo for MARG, featuring the word "MARG" in blue, with "Spirit of Visioneering" below it.	The logo for Shapoorji Pallonji, featuring a stylized "SP" in blue and red, with "Shapoorji Pallonji" below it.	The logo for Chandrasekar Builders P Ltd., featuring a stylized "CB" in red and white, with "Chandrasekar Builders P Ltd." below it.
The logo for Farm Foundations, featuring a stylized house and the text "F.F. FARM FOUNDATIONS".	The logo for BWE, featuring the letters "BWE" in a bold, blue, stylized font.	The logo for ANU BUILDERS, featuring the text "ANU BUILDERS" in white on a dark blue background, with "ANU BUILDERS" below it.	The logo for Sri Sreenivasa CONSTRUCTIONS, featuring a stylized "S" in blue and yellow, with "Sri Sreenivasa CONSTRUCTIONS" below it.	The logo for Piramal Healthcare, featuring a stylized flame and the text "Piramal Healthcare", with "knowledge. action. care." below it.	The logo for S.I.S SOUTH INDIA SHELTERS PVT LTD, featuring a stylized house and the text "S.I.S SOUTH INDIA SHELTERS PVT LTD".	The logo for Atikramya, featuring a stylized "A" in red and yellow, with "atikramya" below it, and "LAYERS OF TRUST" at the bottom.
The logo for USVI, featuring the letters "USVI" in a bold, blue, stylized font.	The logo for Chandrika, featuring a stylized tree and the text "Chandrika", with "CHANDRIKA" below it.	The logo for Apollo Hospitals, featuring a stylized "A" in blue and red, with "Apollo HOSPITALS" below it.	The logo for VIJAY SHANTHI, featuring a stylized flame and the text "VIJAY SHANTHI".	The logo for UrbanTree, featuring a stylized tree and the text "UrbanTree", with "DIMENSIONS UNLIMITED" below it.	The logo for COROMANDEL ENGINEERING, featuring a stylized "C" in blue and grey, with "COROMANDEL ENGINEERING" below it, and "Engineering & Project Services" at the bottom.	The logo for ONGC, featuring a stylized flame and the text "ओएनजीसी" and "ONGC".



———— Mfd ————



ADHERE BONDS

## CORPORATE OFFICE

No.101, W-Block,  
Second Avenue, Anna Nagar,  
Chennai - 600040

Technical : 94440 82750

Marketing: 94440 82770

Customer Care:  
**1800-425-2383**

[www.adherebonds.com](http://www.adherebonds.com)